

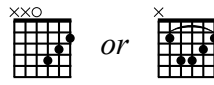
The Best Day

Taylor Swift

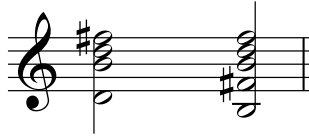
Chords



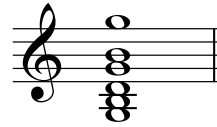
D



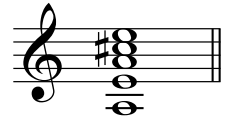
Bm



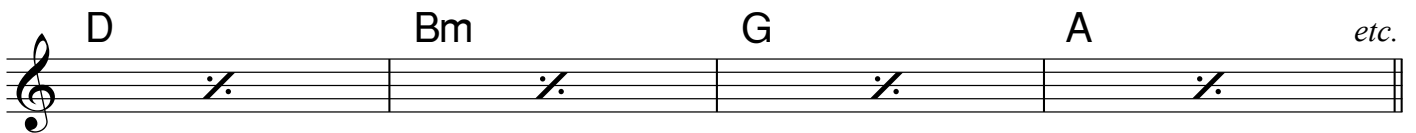
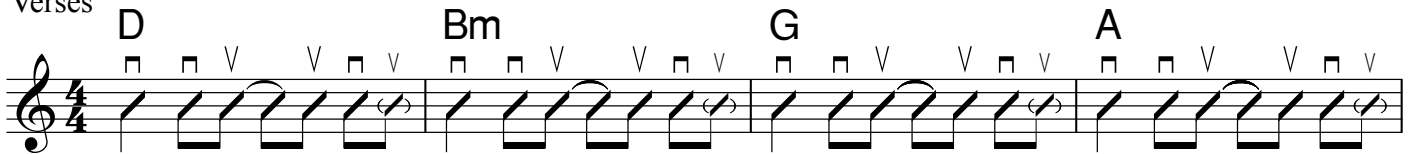
G



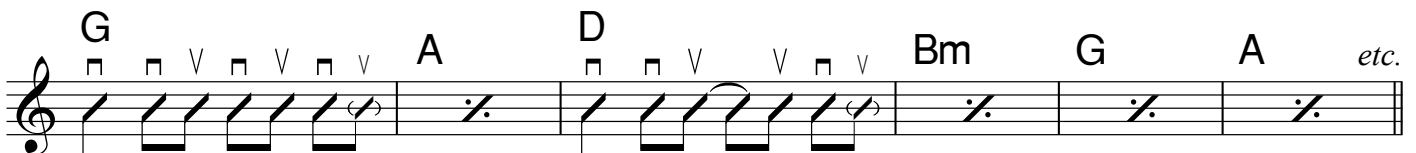
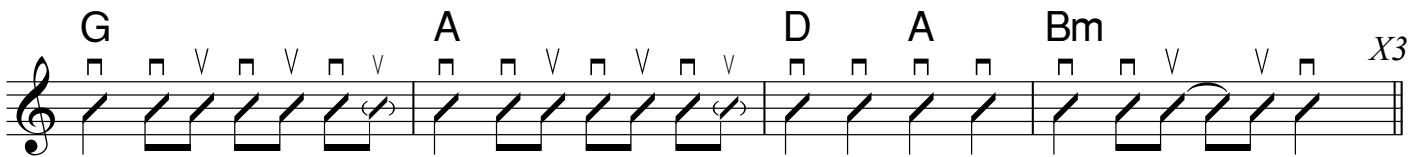
A



Verses



Chorus



Handy hints

The B minor chord sounds best as a bar-chord but you can use the easy version if you need to. Bar-chords are really hard at first, especially if you are playing an acoustic guitar. Practice them for just a few minutes at a time until your hand develops the extra strength needed. To learn more about them refer to pages 34 - 35 in *Modern Guitar Chord Styles, Volume I*.

The Best Day is a good example of a 'turnaround' chord progression. These are a type of progression that are commonly used in Pop and there are several variations that are useful. To learn *more* about turnarounds check out pages 22 - 23 in *MGCS I*

This arrangement and typesetting © Modern Guitar Tuition 2011
For more great guitar tips and song charts go to www.modernguitartuition.com