

Its a Long Way To The Top

AC/DC

Chords



A⁵



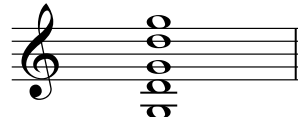
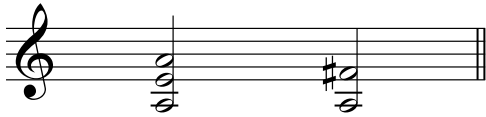
A⁶



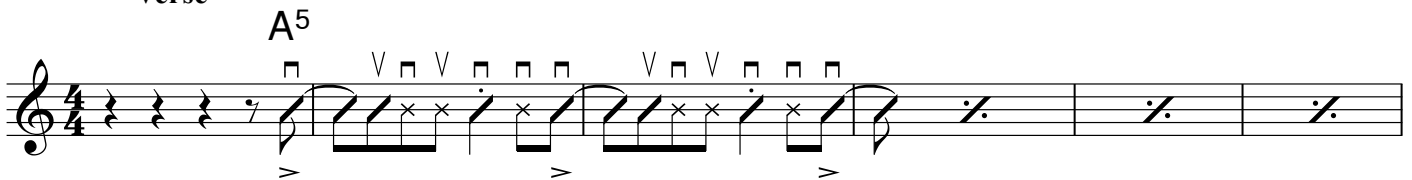
G⁵



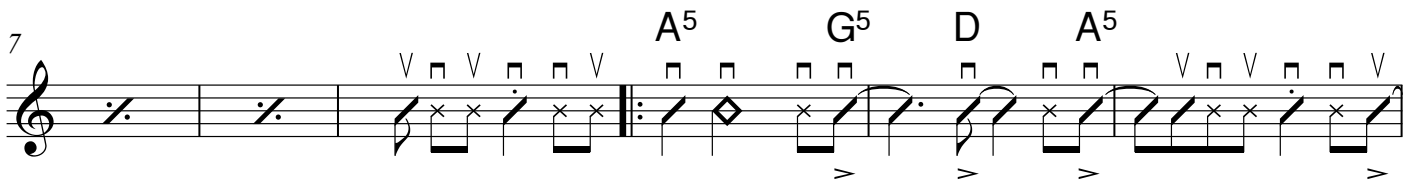
D



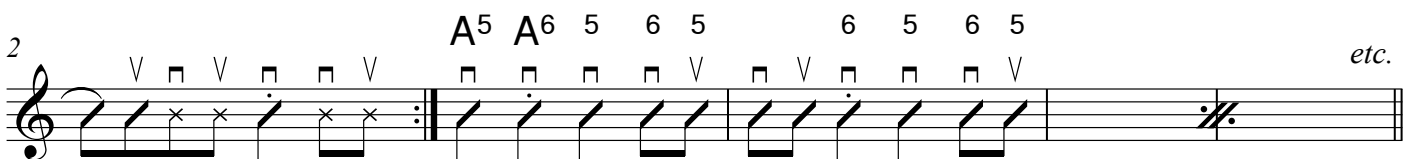
Verse



Chorus



ending



Handy hints

You need to mute the strings not being played to get a good tone with A5 as you need to strike the strings quite firmly with the pick to get the right sound. For the G5 allow the 2nd finger to mute the 5th string. To learn more about Power-chords (Rock-chords) and Rock strumming styles check out *Modern Guitar Chord Styles, Volume 2* - its the best book available to help you learn Electric guitar chords and rhythm techniques

This arrangement and typesetting © Modern Guitar Tuition 2011
 For more great guitar tips and song charts go to www.modernguitartuition.com

Disclaimer: This information serves only as a basic guide to the rhythm guitar part for this song. It is not a complete chart for and is intended purely for the guitar education of the present user.